

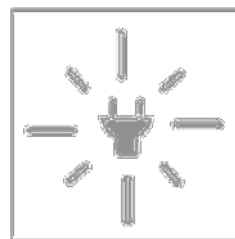
## **YOUTH CLASS—Traditional Exhibits**

- ◆ All Florence County youth, may enter exhibits in the fair. Youth class is defined as:
- ◆ Children under the age of 5, can only enter exhibits listed in Department 17a below.
- ◆ Children ages 5-6 may only enter exhibits listed in Department 17 Classes B through H below.
- ◆ Any child having completed first grade, through grade 12, may enter the rest of the exhibits listed as Youth Class: Departments 1-16 and 18-34.
- ◆ Registration is FREE.
- ◆ Pre-Registration is until August 9.
- ◆ Those pre-registered will have their entry tags printed and waiting for them when they come to drop off their exhibits.
- ◆ Pre-registered exhibitors may still add or remove items from their registration form when they bring their items to the fair.
- ◆ Anyone pre-registered for their fair exhibits will receive a coupon for a free treat from Lydia's fair kitchen.
- ◆ Entries will be accepted after August 9, but it is requested that after August 9, you email your entries or bring your entry form with you to the fair on August 21. All items must be registered by August 21.
- ◆ Mail to: Jessica Klumpp, Executive Director  
P.O. Box 704  
Florence, WI 54121
- ◆ E-mail to: florencecountyfair@hotmail.com

## **Traditional Exhibits that can be entered by Florence County Kids: Ages 7-17, grades 1<sup>st</sup>-12<sup>th</sup>**

### **DEPARTMENT 23: ELECTRICITY**

- ◆ All entries must comply with current OSHA safety standards
- ◆ Cords and trouble lights must be grounded
- ◆ Exhibitors can only enter in their experience group and only one exhibit per lot.
- ◆ Exhibits must be complete with batteries when needed
- ◆ Exhibits must be labeled with a description of what it is and how to operate it on a 4x6 card
- ◆ Posters should be size appropriate for display with maximum size of 14"x22"
- ◆ Premiums for Beginning Electrician:  
1<sup>st</sup> place: \$2.00; 2<sup>nd</sup> place: \$1.75; 3<sup>rd</sup> place: \$1.50; 4<sup>th</sup> place: \$1.25
- ◆ Premiums for Intermediate Electrician:  
1<sup>st</sup> place: \$2.50; 2<sup>nd</sup> place: \$2.25; 3<sup>rd</sup> place: \$2.00; 4<sup>th</sup> place: \$1.75
- ◆ Premiums for Advanced Electrician:  
1<sup>st</sup> place: \$3.00; 2<sup>nd</sup> place: \$2.75; 3<sup>rd</sup> place: \$2.50; 4<sup>th</sup> place: \$2.25

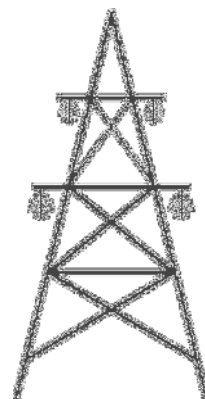


### **CLASS A — BEGINNING ELECTRICIAN (1-2 YEARS EXPERIENCE)**

- 23 A 1 Circuit Board
- 23 A 2 Demo. board, 3 & 4 way switch
- 23 A 3 Display of electric wires labeled
- 23 A 4 Display showing types fuses
- 23 A 5 Electric question board
- 23 A 6 Homemade Buzzer
- 23 A 7 Homemade flashlight
- 23 A 8 Model electric motor
- 23 A 9 Other homemade electric equipment
- 23 A 10 Other low volt/magnetic device
- 23 A 11 Poster of electric terms and definitions
- 23 A 12 Scrapbook of experiments
- 23 A 13 Test lamp
- 23 A 14 Any other low voltage or magnetic device

### **CLASS B — INTERMEDIATE ELECTRICITIAN (3-4 YEARS EXPERIENCE)**

- 23 B 1 Display of incandescent lamps, fluorescent tubes, light fixtures, identified and differences identified
- 23 B 2 Display of motor types
- 23 B 3 Display showing types of fuses
- 23 B 4 Homemade lamp/lighting unit
- 23 B 5 Lighting poster or chart
- 23 B 6 Other homemade electric equipment
- 23 B 7 Other low volt/magnetic device
- 23 B 8 Plans lighting improvements
- 23 B 9 Plans showing lighting improvements in the home



- 23 B 10 Poster of electrical items that heat or cool
- 23 B 11 Scrapbook of experiments
- 23 B 12 Test Lamp
- 23 B 13 Trouble light
- 23 B 14 Any other electric project not listed

**CLASS C — ADVANCED ELECTRICITY (5+ YEARS EXPERIENCE)**

- 23 C 1 Diagram of electrical improvements
- 23 C 2 Diagram or photos with description of electrical improvement made at home
- 23 C 3 Display showing motor types, operation of maintenance
- 23 C 4 Electrical central system display
- 23 C 5 General layout of home or other building wiring system: service drop branch circuits
- 23 C 6 Homemade electrical equipment
- 23 C 7 Homemade lamp or lighting until
- 23 C 8 Other low volt/magnetic device
- 23 C 9 Poster showing peak load times and what can be done to help reduce it
- 23 C 10 Safety poster with high voltage
- 23 C 11 Scrapbook of experiments
- 23 C 12 Show how an electric bill is calculated
- 23 C 13 Wiring layout home or other
- 23 C 14 Any other electric project not listed